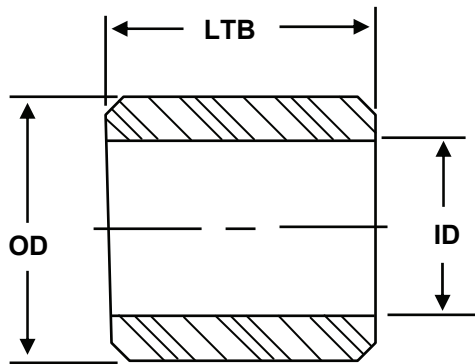


BUSHINGS



Sleeve Bushings are available from 1/4" OD to 48" OD in a variety of engineered plastic materials. Including Natural UHME PE, Natural Nylon, Molly filled Nylon, and Oil Filled Nylon. Our technical support staff will be glad to assist in assuring that the proper material is applied to you application. If you supply the information below we can help suggest things such as running clearance, press fit, etc. **We would like to help with your bushing needs; standard or custom.**



Cylindrical Sleeve Bushing
Interchangeable with standard bronze bushings

Nominal	Size	(in.)	Housing	Bore	Shaft	Size
ID	OD	LTB	MAX	MIN	MAX	MIN
1/8	1/4	1/8 1/4 3/8	.2515	.2510	.1250	.1241
3/16	5/16	3/16 1/4 3/8 1/2	.3140	.3135	.1875	.1866
1/4	3/8	1/8 3/16 1/4 5/16 3/8 1/2 5/8 3/4	.3765	.3760	.2500	.2491
5/16	7/16	1/4 5/16 3/8 1/2 5/8 3/4 1	.4390	.4385	.3125	.3116
3/8	1/2	1/4 3/8 1/2 5/8 3/4 1	.5015	.5015	.3750	.3741
7/16	9/16	3/8 1/2	.5635	.5625	.4375	.4365
1/2	5/8	1/4 5/16 3/8 1/2 5/8 3/4 1	.6260	.6250	.5000	.4990
5/8	13/16	1/2 5/8 3/4 1	.8135	.8125	.6250	.6240
3/4	1	1/2 5/8 3/4 1 1 1/2	1.0010	1.0000	.7500	.6240
7/8	1 1/8	3/4 1	1.1260	1.1250	.8750	.8740
1	1 1/4	1/2 5/8 3/4 1 1 1/2	1.2510	1.2500	1.0000	.9990
1 1/4	1 1/2	3/4 1 1 1/2	1.5005	1.4995	1.2500	1.2490
1 1/2	1 3/4	3/4 1 1 1/2	1.7505	1.7495	1.5000	1.4990
1 3/4	2	3/4 1 1 1/2	2.0005	1.9995	1.7500	1.7490
2	2 1/4	1 1/2 2	2.2505	2.2495	2.0000	1.9990

800-295-7660